



THE SPIRIT  
STRONG • BRAVE • TRUE

# **NORTH AMERICAN INDIGENOUS GAMES**

July 2nd-9th

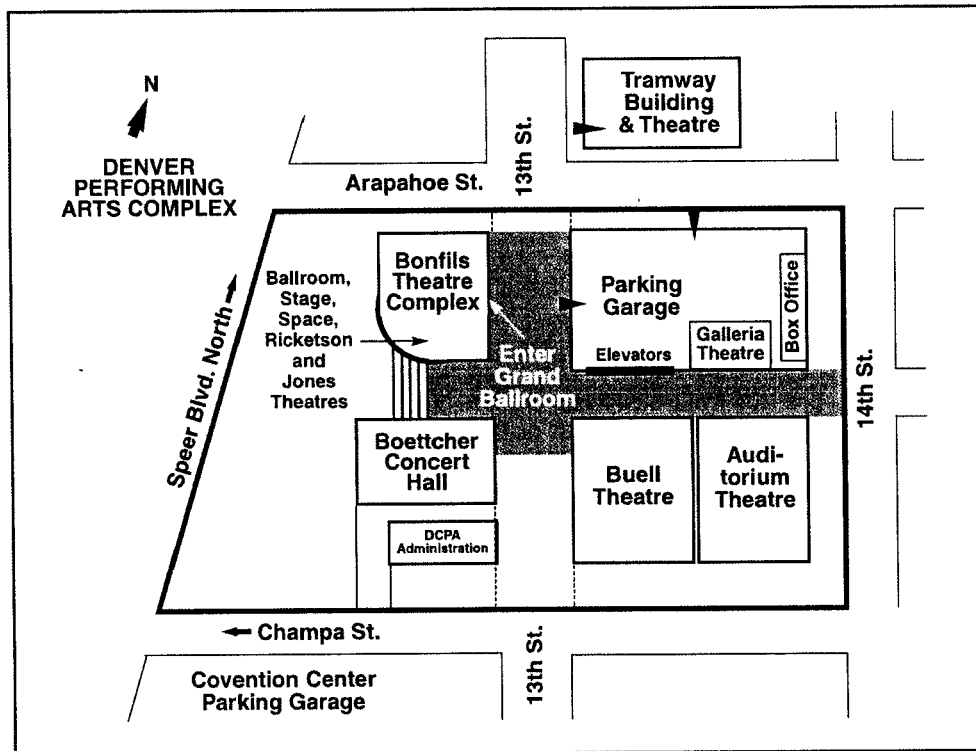
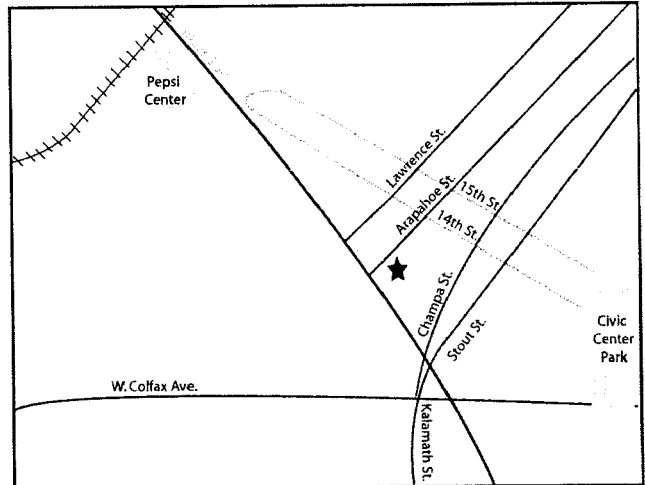
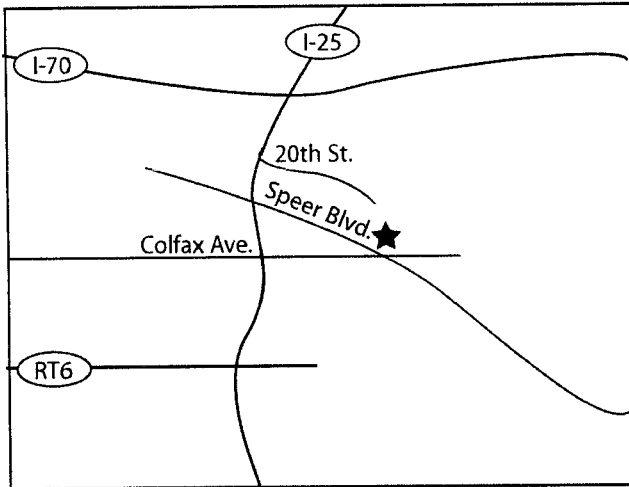
**DENVER 2006**



DENVER  
2006

## **CULTURAL VENUES OPENING & CLOSING CEREMONIES**

# Denver Center / Performing Arts Complex



## DIRECTIONS

**DENVER CENTER FOR THE PERFORMING ARTS** 1101 13th St. Denver, CO 80204

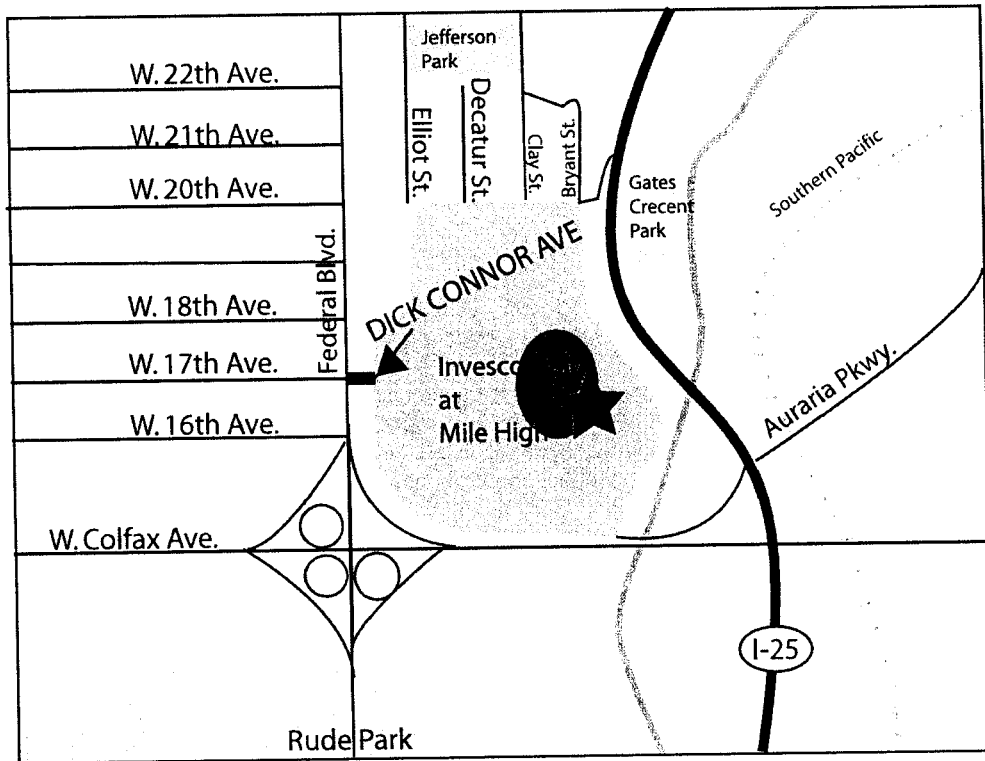
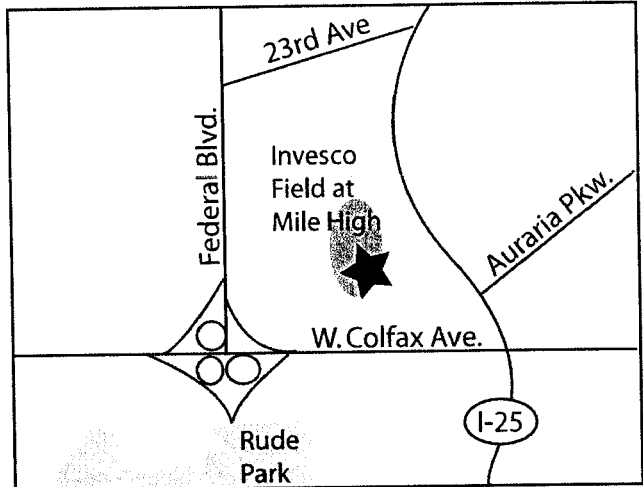
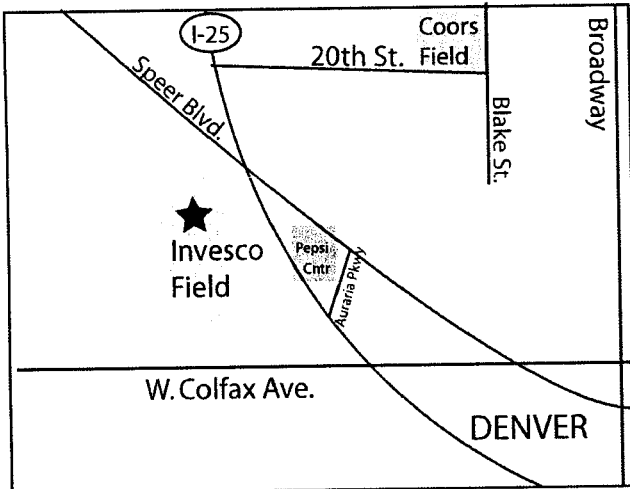
### Directions from the North

I-25 South  
 Exit Speer South  
 Left (south)  
 Left on Arapahoe St.

### Directions from the South

I-25 North  
 Exit Colfax East  
 Left Speer Blvd.  
 Right on Arapahoe St.

# Invesco Field at Mile High



## DIRECTIONS

2755 W. 17th Ave, Denver, CO 80204

### DIRECTIONS FROM THE NORTH

I-25 South  
 Exit Colfax go Right or West  
 Right on Federal Blvd.  
 Right on W. 17th Avenue/  
 Dick Connor Ave.

### DIRECTIONS FROM THE SOUTH

I-25 North  
 Exit W. Colfax Ave.  
 Right Federal Blvd.  
 Right on W. 17th Avenue /  
 Dick Connor Ave.